

3/32" DIA TUBING FOR LEAD OUTS (2EA)

0.016" CABLE TYPE LEAD OUTS OR TO SUIT.

USE COMMERCIAL STOCK FOR LEADING EDGE, 1/2" HIGH X 3/8" WIDE

1/16" PLY REINF.

SPAR CAPS ARE 1/4" X 3/32"

1/16" PLY 1/2" A BELL-SHANK MIS. 2 REQ'D. FOR TOP & BOTTOM. USE DOWEL SPACERS TO CENTER AS SHOWN IN SIDE VIEW.

♀ FUSE

♀ WING

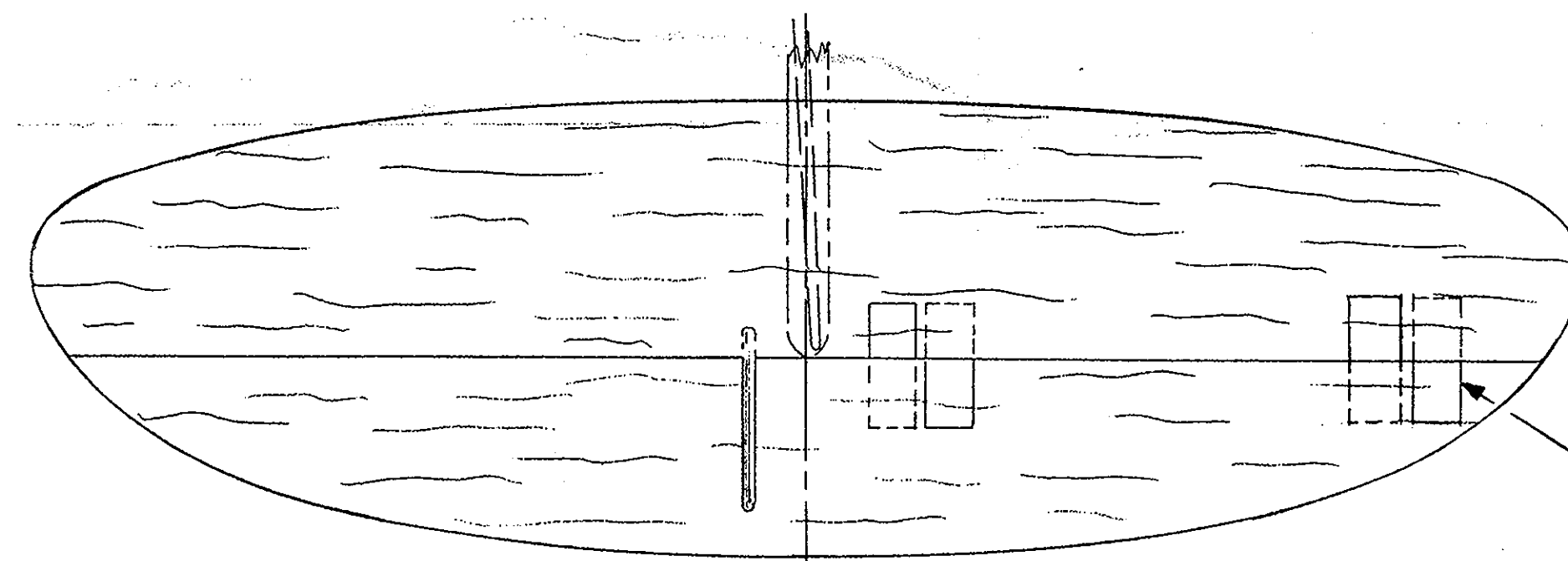
1/16" MUSIC WIRE PUSH ROD

1/4 OZ LEAD WGT. ON OUT-BOARD WING TIP TO BALANCE LEAD-OUTS.

1/8" SHT. WING TIP.

TRAILING EDGE IS FROM COMMERCIAL STOCK OR TRIMMED TO FIT. 1/4" X 5/8"

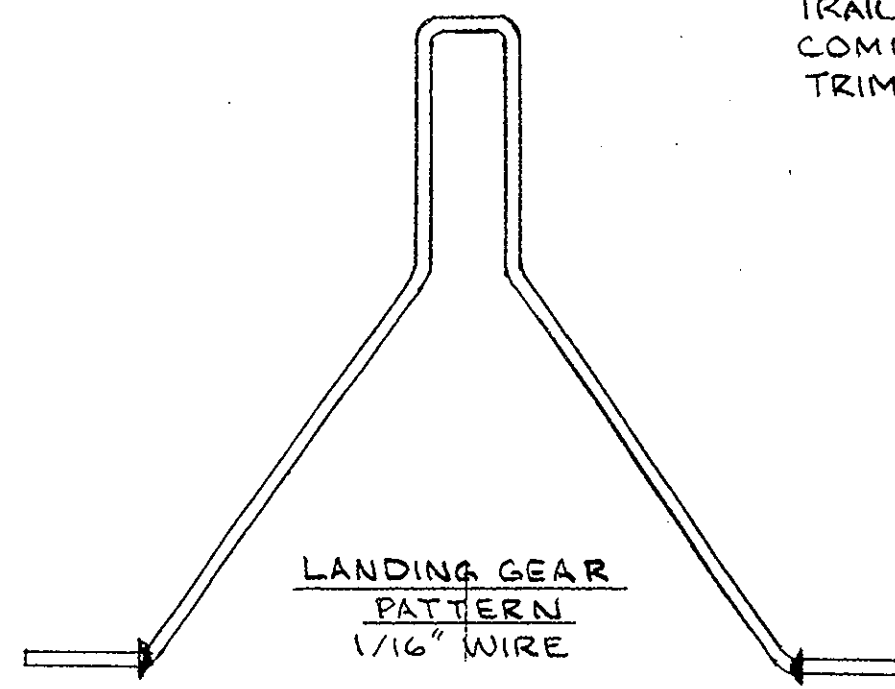
WING VIEW
NOTICE WING IS OFFSET MOUNTED ON THE FUSELAGE.



POLYESTER CLOTH HINGES SHOWN AS TYPICAL @ PLACES.

♀ HORIZONTAL TAIL
HARD 1/16" SHT

HARD 1/16" SHT. VERTICAL TAIL. OFFSET 1/8" TO HOLD MODEL TO OUTSIDE OF THE FLYING CIRCLE.



LANDING GEAR PATTERN 1/16" WIRE

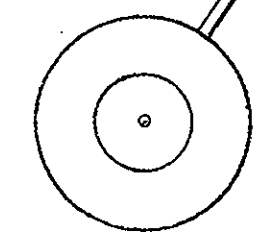
1/16" PLYWOOD SHT. DOUBLER ON EACH SIDE OF FWD. FUSELAGE.

PAINT CANOPY OUTLINE IN SILVER PAINT AS SHOWN.

WIDTH TO MATCH ENGINE CHOICE.

TANK LOCATION

1/4" X 3/16" MAPLE MOTOR MOUNTS BETWEEN 1/16" PLY DBLRS.



INSERT LG. GEAR IN 1/16" HOLE FWD. OF WING BEFORE INSTALLING THE WING & BIND TO FUSE, WITH SOFT WIRE AS SHOWN.

SIDE VIEW
MAKE FUSELAGE TO ABOVE OUTLINE FROM 1/4" VERY HARD BALSA SHT.

1/16" PLY TAILSKID

1/16" PLYWOOD CONTROL HORN WAS TYPICAL OF THE ORIGINAL DESIGN. METAL ONE CAN BE USED.

BABY RINGMASTER
C/L for .049 - .061 Engines
Span: 22" Length: 16" Wgt: 7oz
Modified from Sterlings Original
Front Mount Engine
This Plan Is Copyrighted