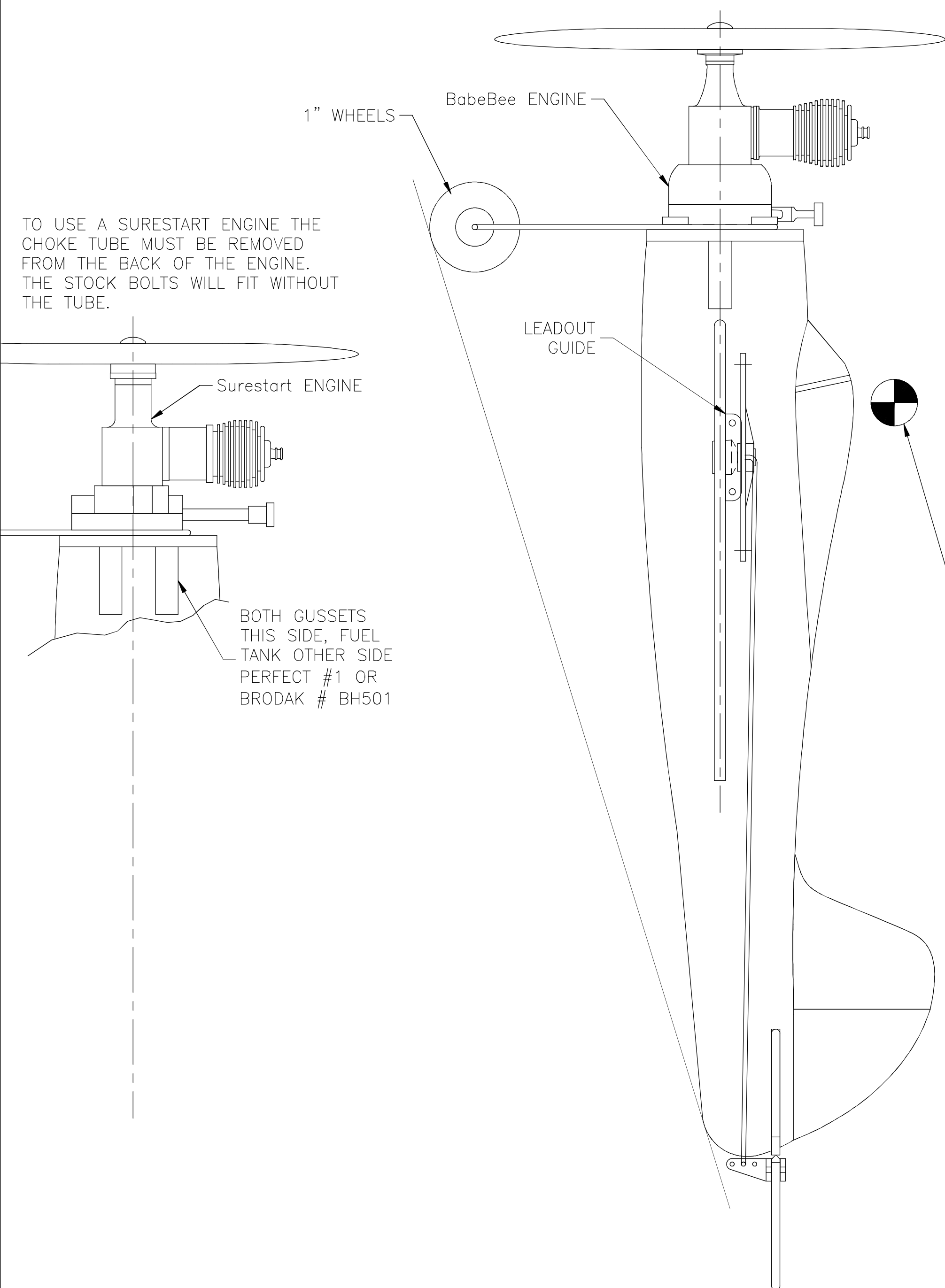
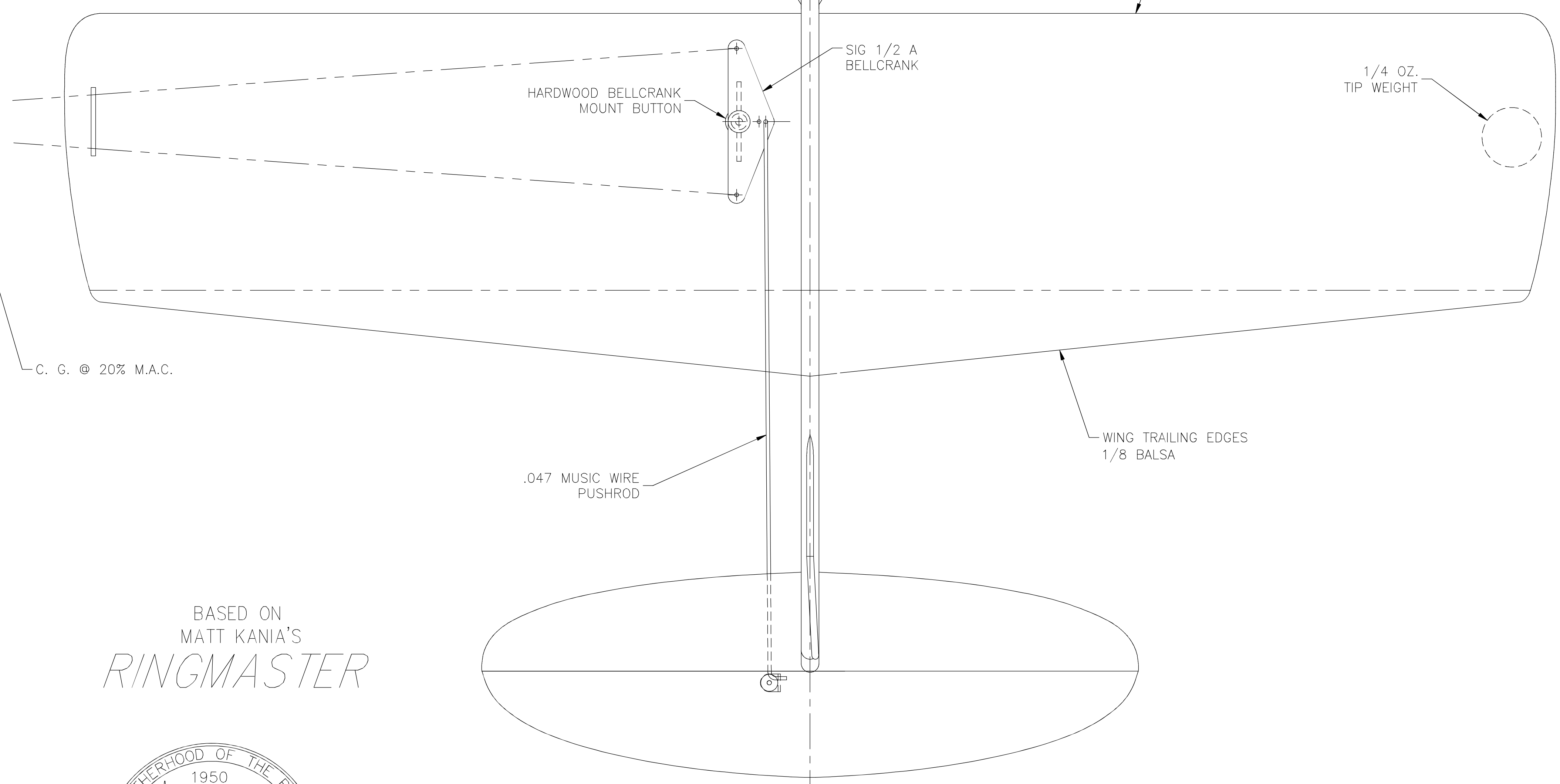
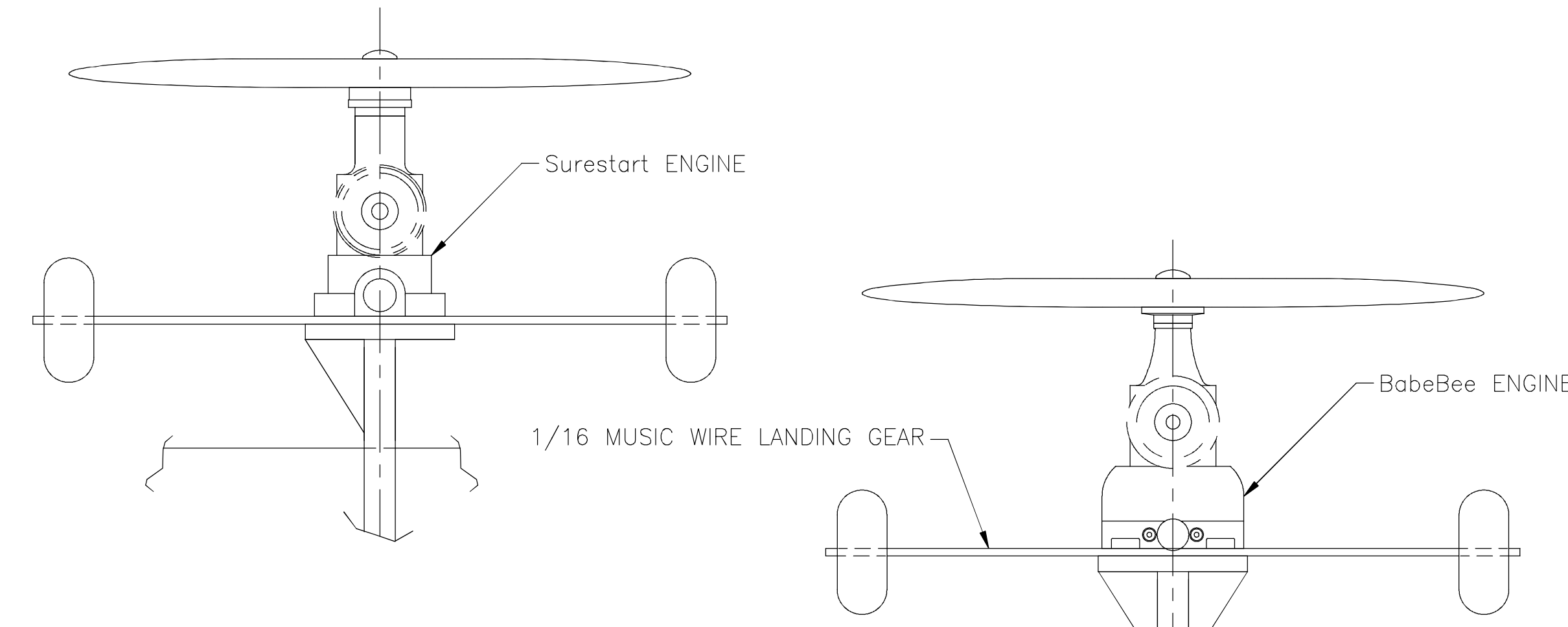


WARNING— DANGER!
 DO NOT FLY NEAR POWER LINES!
 INSTANT DEATH CAN RESULT FROM
 CONTACT WITH, OR PROXIMITY TO
 ELECTRIC POWER LINES.



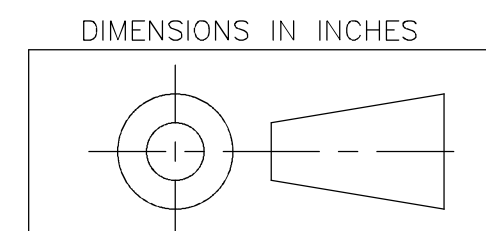
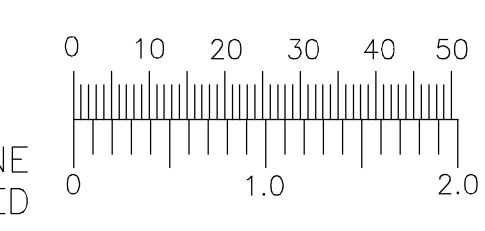
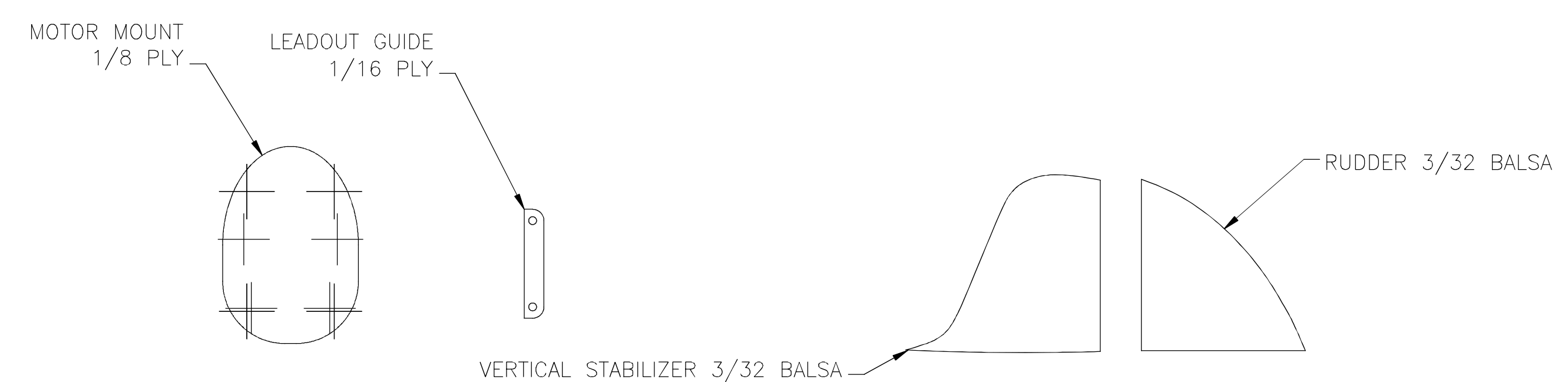
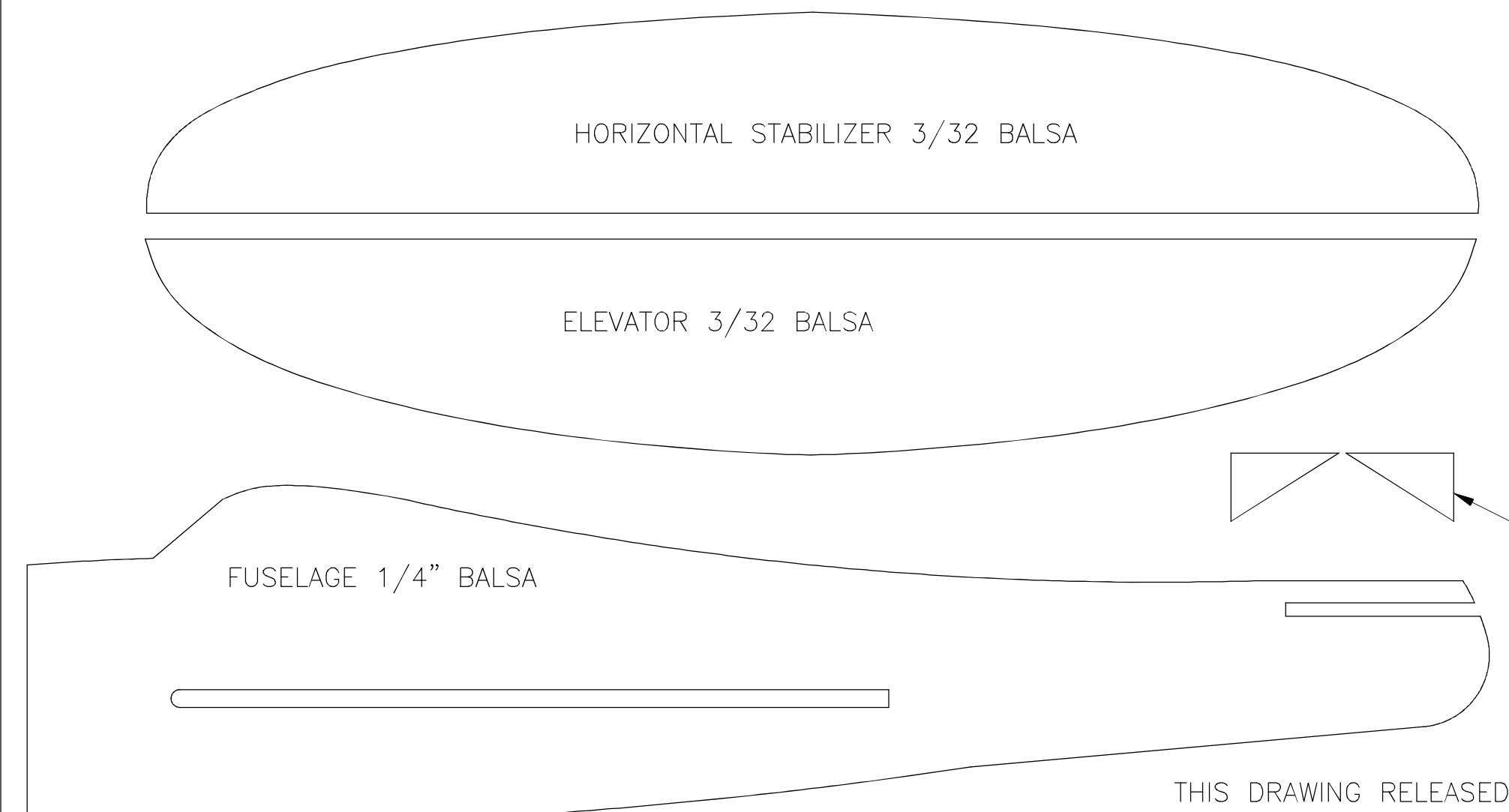
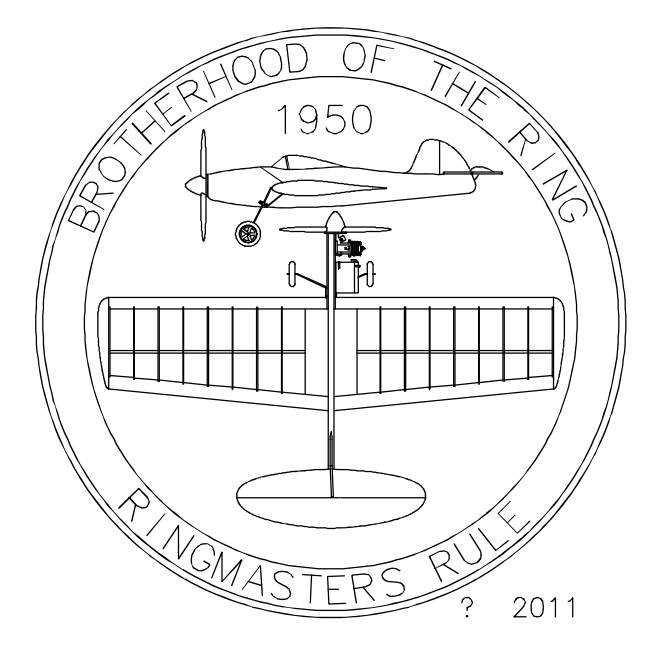
TO USE A SURESTART ENGINE THE
 CHOKE TUBE MUST BE REMOVED
 FROM THE BACK OF THE ENGINE.
 THE STOCK BOLTS WILL FIT WITHOUT
 THE TUBE.

BOTH GUSSETS
 THIS SIDE, FUEL
 TANK OTHER SIDE
 PERFECT #1 OR
 BRODAK # BH501



C. G. @ 20% M.A.C.

BASED ON
 MATT KANIA'S
RINGMASTER



BEGINNERS RINGMASTER
 1/2 A
 21" SPAN 95 SQ. IN.
 STERLING KIT S30

© 2009, 2012 PDK LLC ALL RIGHTS RESERVED

PDK LLC
 5133 Jason Dr. Monee, IL 60449 Ph. 708-921-6322 patdk@aol.com

REV	DATE	BY	REVISION	TOLERANCE UNLESS SPECIFIED	ANGLE ± 0.5 DEGREES	LBS	KGS
				0.0 ± .03	0.000 ± .001	.	.
				0.00 ± .005			

THIS DRAWING AND ALL INFORMATION THEREOF IS THE PROPERTY OF PDK LLC. IT IS LOANED FOR THE SOLE PURPOSE OF DISCUSSION OR MAINTENANCE OF EQUIPMENT OR DESIGNS SUPPLIED BY PDK LLC. REPRODUCTION OF THIS DRAWING OR DISCLOSURE TO ANY OTHER PARTY IS NOT AUTHORIZED. ALL RIGHTS RESERVED.

CHECKED	APPROVED	PLANS
DRAWN <i>patdk</i>	DATE 19 OCT 09	DWG NO BEGRM
SCALE FULL		REV. 0 SHEET 1 OF 1